



Panic disorder
affects up to
5%
of the population
at some point in life

ALPRACONTM-PR

Alprazolam 0.25 mg + Propranolol 20 mg **Tablets**

- » Effective first line treatment for :
Angina, Hypertension & Anxiety
- » Useful in prophylaxis of myocardial infarction
- » Controls migraine & relieves anxiety & tension
- » Improves patient's work performance



PANIC DISORDERS | ANXIETY

Also Available :

ALPRACONTM **0.25**
0.5

Alprazolam 0.25 / 0.5 mg **Tablets**

ALPRACONTM *Plus*

Alprazolam 0.5 mg + Sertraline 50 mg **Tablets**

...say Goodbye to Anxiety



Balanced the **Unbalanced** Situation

BOLZAMTM 
Clobazam 5mg & 10mg
MD Tablets

Clobazam

- Exerts anxiolytic and anticonvulsant effect
- A benzodiazepine affects chemicals in the brain that may be unbalanced in people with anxiety
- Used to treat seizures caused by lennox-gastaut syndrome causes developmental and behavior problems.
- Helps to produce a calming effect.

Childhood epilepsy
Anxiety | Seizure

BOLZAMTM 
**Reverse the
Symptoms**

Improves Brain & Memory Functions



BRAINSTORMTM Brain Tonic (Ayurvedic) Syrup

Formulated with the most beneficial groups of nutrients for your brain and overall health.

Build brain cell membranes, reduce brain inflammation, and promote new brain cell formation.

Improve your mood and memory and give you protection against brain disorders ranging from depression to dementia.

Mental stress

Increase Concentration

Enhance Memory

Brain growth



Relieves Mental & Physical Fatigue



Rejuvenate life with active power



BranchvitTM

*Antioxidant with Multivitamin, Multimineral, Lycopene,
Green Tea Extract & Methylcobalamin Tablets*

- Diminishes fatigue
- Regulates sugar & cholesterol levels
- Fights the free radicals damaging effects
- Maintains healthy nerves and connective tissues
- Exhibits positive effect on growth, energy & appetite



Stress & Fatigue



Pregnancy & Lactation



General Debility



CNS Disorder



Also Available :

BranchvitTM

*Lycopene 6% 2500mcg + Cyanocobalamin 0.35mcg
+ Multivitamin & Multimineral Syrup*

Building blocks for a healthy life



**MAKE THE
NEURO PAIN
GO**

COBALCONTM-PG

Pregabalin 75mg + Methylcobalamin 750mcg **Tablets**

PREGABALIN

- » Shown greater potency than gabapentin in pain & seizure disorders
- » Approved by the USFDA specifically for the treatment of fibromyalgia

METHYLCOBALAMIN

- » Promotes the regulation of DNA synthesis and energy production
- » Improves the autonomic neuropathy in treatment of uremic patients on hemodialysis

**Fibromyalgia | Postherpetic neuralgia | Low back pain
Neuropathic pain from diabetic neuropathy | Peripheral neuropathy**

ALSO AVAILABLE :


COBALCONTM-PLUS

Methylcobalamin 1500mcg + Pyridoxine Hcl. 100mg
+ Niacinamide 100mg **Injection**

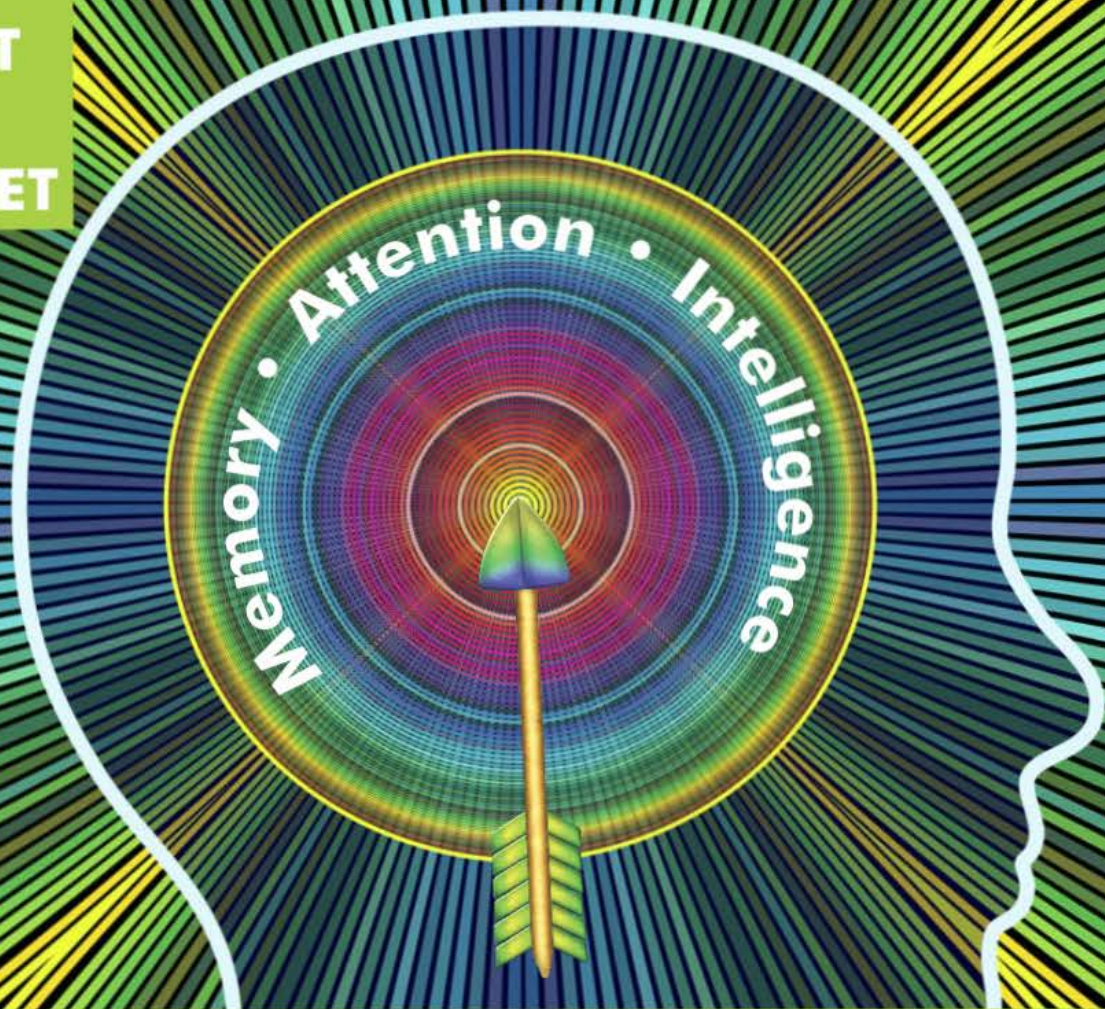
COBALCONTM-1500

Methylcobalamin 1500mcg **Injection**

Forget **health problems..** get the **real mental peace**



**RIGHT
ON
TARGET**



**CONCETAMTM 400
800**

Piracetam 400mg/800mg Tablets

Piracetam - A psychotropic drug

- Improves microcirculation on account of its haemorrhheological properties
- Enhances the functionality of the brain involved in cognitive operations, such as memory
- Improves microclimate that promotes the metabolism & regulates neurotransmission
- Protects cerebral cortex against hypoxia

Cortical myoclonus

Cognitive enhancer

**Degenerative disease
of the brain**

Also available :

CONCETAMTM
Piracetam 200ml Syrup

**Improves intensity
& stability of attention**



Breaks Down the Continuity of Life

CONLAR LATM 20/40

Propranolol HCl. Long Acting 20/40 mg Tablet

- Non selective beta adrenergic receptor blocking agents.
- Approved by FDA for the treatment of hypertension, angina, certain types thyroid condition, Migraine headaches.
- Higher safety in geriatric & cardiac patients

MIGRAINE

HYPERTENSION

ANGINA PECTORIS

ESSENTIAL TREMOR

ATRIAL FIBRILLATION

CONLAR LATM 20/40

...keeps panic at Large

In **IBS** we offer a specialist

Conmaxin

Chlordiazepoxide 5mg + Clidinium Bromide 2.5mg **Tablets**



- Chlordiazepoxide exerts anxiolytic effects & clidinium has an anticholinergic effect thus controls some emotional & somatic factors in G. I disorders
- Shows supra additive effects in gastric ulcers by inhibiting acid secretion & acts as an antispasmodic by blocking the action of nerves

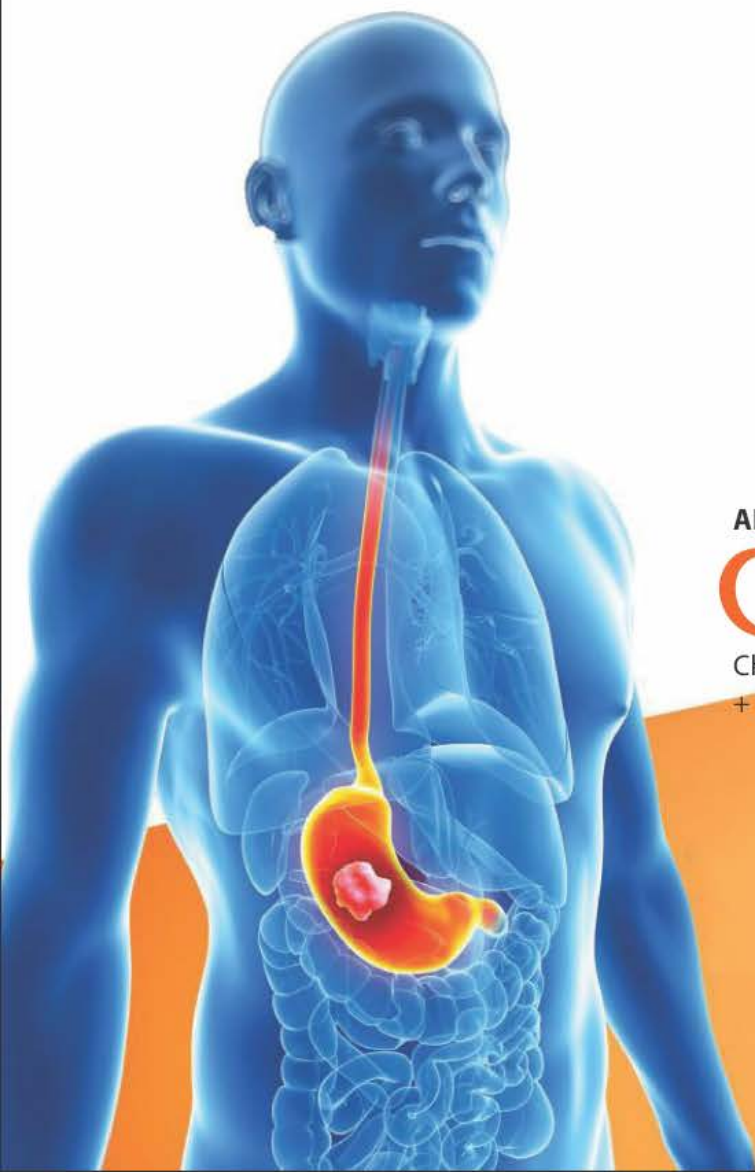
- **Gastritis**
- **Peptic Ulcer**
- **Mucous Colitis**
- **Irritable bowel syndrome**

ALSO AVAILABLE :

Conmaxin-D

Chlordiazepoxide 5mg + Clidinium Bromide 2.5mg
+ Dicylomine HCl. 10mg **Tablets**

--- **Reliable DUO to** ---
Control Stomach Ulcers



**Ensure your patients
with Power of**

D3

D3-CONTM

Cholecalciferol 60000 IU Injection

The rapid calcium conservation....

- Improves absorption & functioning of calcium
- Ensures bone mineralization, induces muscle cell growth
- Reduces bone & muscle pain, improves skeletal muscle functions

Cholecalciferol overcomes Vitamin D deficiency, exerts anti- osteoporotic, anticarcinogenic, antipsoriatic, immunomodulatory, anti- oxidant & mood modulatory activities.

Rickets

Osteomalacia

Fracture

**Bone &
muscle pain**

Osteoporosis

Also available :

D3-CONTM

Cholecalciferol 60000 IU Softgel Capsules

Ensures the strength back in bones



Let the Patient be Free
from **DEPRESSION**
Quickly

DEPDOFTM **20**
40
60
Fluoxetine 20/40/60 mg Capsules

Fluoxetine produces significant reduction in anxiety & phobic avoidance
and is effective & well tolerated in patients with major depression
& associated anxiety.

Safe & effective in reducing symptoms of panic disorders.

IN

Major
Depressive
Disorder

Obsessive
Compulsive
Disorder

Panic Attack

DEPDOFTM **20**
40
60 Reignites the mind



Skip the
Depression Trench
to **Enjoy Quality Life**

DEPNOTETM-CZ

Escitalopram 10mg + Clonazepam 0.5mg **TABLETS**

In major depressive disorders

ESCITALOPRAM + CLONAZEPAM

- Improve the chemical action in the brain.
- Acts on the serotonin -system in the brain to normalize mood.

In

- Anxiety associated with depression
- Mood & personality disorders
- Panic attacks with or without agoraphobia
- Sleep disorders

Also available :

DEPNOTETM 5
10
20
Escitalopram 5/10/20mg **TABLETS**

...liberates from Mental Stigma

Draw the
NO line
for Seizures

Reduce Seizures
on Time

DIVROCTM
Divalproex Sodium Extended Release **Tablets**

250

500

750



The right choice in epilepsy

Divalproex Sodium

- An anticonvulsant that works in the brain tissue to stop seizures
- Adjunctive therapy in the treatment of simple and complex absence seizures
- Treats manic phase of bipolar disorder and helps prevent migraine headaches
- Manage and control of certain types of seizures
- Useful in people 18 years of age and older with manic depression

Epilepsy

Mania

Migraine Prophylaxis

DIVROCTM Effectively controls seizures

Note
the Cause



DIVROCTM PLUS 500

Sodium Valproate 333mg + Valproic Acid 145mg **Tablets**



- Controls seizures or fits by suppressing the abnormal excessive activity of the nerve cells in the brain
- Inhibits the establishment of chronic experimental seizure foci & prevents kindling
- Used for the treatment of seizures those with absence seizure, partial seizure and generalized seizures.
- Effective in prophylactic treatment of bipolar psychosis

Also available :

DIVROCTM PLUS 300

Sodium Valproate 200mg + Valproic Acid 87mg **Tablets**

DIVROCTM PLUS 200

Sodium Valproate 133.5mg + Valproic Acid 58mg **Tablets**

Complex partial seizure

Epilepsy

Mania

Migraine

Enjoy daily routine work

Make Today the day.. to Enjoy Quality life

DOTHICONTM 25 50 75

Dothiepin 25/50/75mg Tablets

Tricyclic
Antidepressant
TCA's

Proven
Antidepressant
with Anxiolytic
Action

Elevates Mood

Increase
levels of
Norepinephrine
& Serotonin

Relieves
Chronic &
Ongoing Pain
Disorders

Treats
Insomnia
& Anorexia

Uplift your depressed patients with.... **DOTHICON**TM

When your patients become a victim
of *painful depression*



DULOSTINTM 20 30 40

Duloxetine 20/30/40 mg **Tablets**

- A novel dual acting, non-sedative antidepressant
-Acts as a selective serotonin & norepinephrine reuptake inhibitor
- Improves both classical emotional & somatic symptoms of depression
- Exhibits antinociceptive properties independently effect
- Helps to restore the balance of certain natural substances (serotonin and norepinephrine) in the brain.

Depression

Generalized Anxiety Disorders

Neuropathy

Stress Urinary Incontinence

DULOSTINTM 20 30 40

...revives Normal *Mental Health*



Combined to

PERISH THE SCHIZOPHRENIA

EPIRENTTM-PLUS

Resperidone 3mg + Trihexyphenidyl 2mg **Tablets**

Risperidone

- » An atypical antipsychotic with Dopaminergic & serotonergic effects.
- » Efficiently treats mental & mood disorders.

Trihexyphenidyl

- » An antiparkinsonian, antimuscarinic agent.
- » Prevents & treats extrapyramidal effects due to CNS drugs.

• **Reduces agitation, aggression & irritability**

• **Relieves anxiety, depression & negativity**

• **Treats tremors, difficulty in walking & muscle tone**

• **Restores clear thinking & functional life**

• **Schizophrenia**

• **Autistic disorders**

• **OCD**

• **Bipolar Disorders**

• **Tourette syndrome**

• **Acute mania**

Also available :

EPIRENTTM **1**
2

Resperidone (MD) **Tablets**

**THE SAFE & SUPERIOR
ANTI PSYCHOTIC**

Rip the Stress from Life...

ETIZYN-ETTM

Etizolam 0.5mg + Escitalopram 10mg

Tablets

Escitalopram and Etizolam is a combination of selective serotonin reuptake inhibitors (SSRIs) & antidepressant with sedating property.

Escitalopram

- Works by helping to restore the balance of a certain natural substance (serotonin) in the brain.
- Improves energy level and feeling of well-being and decrease nervousness.

Etizolam

- Possesses very strong sedative effects & Helps to make the patient calm and relaxed
- Etizolam possesses potent hypnotic properties and is comparable with other short-acting

Returns to Normal Sleep

Major depressive disorders

Obsessive-compulsive disorders

Social anxiety disorders

Depression

Panic disorders



*Let the Stress
Rest in Peace*

ETIZYN-PRTM

Etizolam 0.5mg + Propranolol 20mg

Tablets

ETIZOLAM

- Possesses very strong sedative effects
- Helps to make the patient calm and relaxed
- Possesses potent hypnotic properties and is comparable with other short-acting benzodiazepines.

Eur. J. Clin. Pharmacol. 40 (2): 181-5

PROPRANOLOL

- Relieves tachycardia & tremors in anxiety patients

Also available :

ETIZYNTM 0.25
0.5
Etizolam 0.25/0.5mg **Tablets**

Panic attacks

Anxiety

Insomnia


Return back to Normal Sleep



*As life is Precious
We strive to protect it !*



SCF-406, Second Floor, Motor Market., Manimajra, Chandigarh -160101,
Phone : 0172-4666306, 5177741/42/43
E-mail : neuroconmkt@gmail.com
Web : neuraclelife.com



*Connecting
life with
Happiness*



Does it feels
like **Pain?**



GABTIMETM-NT

Gabapentin 400mg + Nortriptyline 10mg **Tablets**

Gabapentin

- An alpha 2 delta ligand which decreases pain by modulating calcium channel activity of the nerve cells.

Nortriptyline

- A tricyclic antidepressant which increases the levels of chemical messengers (serotonin & noradrenaline) that stop the movement of pain signals in the brain.

Neuropathic Pains | Diabetic Peripheral Neuropathy

Post Hepatic Neuralgia | Fatigue

Also available :

GABTIMETM-M Tablets

Gabapentin 300mg + Methylcobalamin 500mcg

...eases **Neuropathic Pain**

*When you
awake full night*



**EVERY
DAY
BRINGS
A CHOICE
TO PRACTICE
STRESS OR
TO PRACTICE
PEACE**



HOTRESTTM 5 10

Zolpidem 5mg & 10mg Tablets

Quickly help you fall asleep....

ZOLPIDEM

- A non-benzodiazepine sedative.
- Affects chemicals in the brain that may be unbalanced in people with sleeping problems
- A sequential form benzodiazepine does not cause drug-induced hangover
- Helps to fall asleep faster and stay asleep longer

**HOTREST
PEELS** / **HOTREST
SLEEP**

HOTRESTTM 5 10

Take a good sleep....



Mental Health...

*is not a destination but a process.
It's about how you drive, not where you're going.*

Psychiatric disorders are increasing day by day due to the fast pace lives of the people, the stress and negativity is so much that they are not able to keep up the pace of life. Psychiatric disease can affect human's life at any age and thus interfere with the ability of a person to live happy and healthy life.

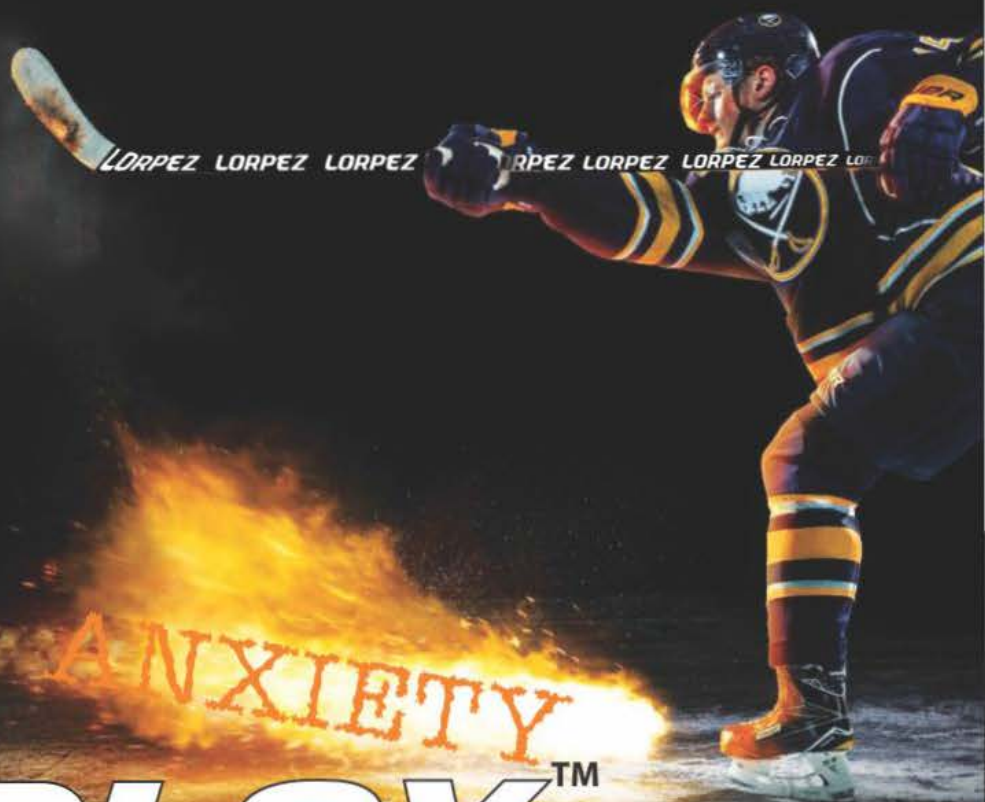
Thereby understanding the need of market, Neurocon Inc. has come up with Neuropsychiatry range of products for the diseases such as Schizophrenia, Depression, Bipolar Disorder, Obsessive Compulsive Disorder, Anxiety Disorder, Psychotic Disorders, G.I. Disorders, Painkillers etc.

Thus helping you to make the life of your patients.

“Connecting life with Happiness”



When
Anxiety
place you in
Darkness...



LORLOXTM 1&2

Lorazepam 1mg/2mg **Tablets**

- » Lorazepam is a drug of the benzodiazepine class & is a sedative, a hypnotic and an anxiolytic.
- » Benzodiazepines achieve these effects by enhancing the effect of the neurotransmitter gamma-aminobutyric acid (GABA) at the GABAA receptor.
- » Works by slowing down the communication between the nerves in the brain



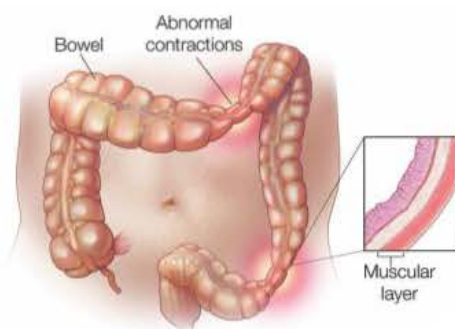
Lorazepam has a calming effect, reduces anxiety, relaxes the muscles and makes drowsy & further stops seizures.

- Anxiety
- Restlessness
- Insomnia
- Panic disorders

LORLOXTM Opens the way of brightness

IBS

can make life painful



Mebevex-C

Mebeverine 135mg + Chlordiazepoxide 5mg

TABLETS

Mebeverine

- » Has a direct relaxant effect on smooth muscle.
- » It inhibits gastrointestinal propulsive motility and gastric acid secretion.

Chlordiazepoxide

- » Chlordiazepoxide is a versatile, therapeutic agent of proven value for the relief of anxiety and tension.
- » A benzodiazepine which act on the brain and nerves (CNS) to produce a calming effect.

■ IBS ■ Colicky Pain ■ Diverticulosis
■ Ulcers ■ Constipation ■ Diarrhoea

Treats IBS, Relieves Anxiety





When Life go
Round & Round

MIGRUB-10TM

Flunarizine 10 mg **Tablets**



DECREASES
the frequency of
migraine

- ▲ **CALCIUM CHANNEL BLOCKER**
- ▲ **NON- SELECTIVE CALCIUM ENTRY BLOCKER**
- ▲ **HISTAMINE H1 BLOCKING ACTIVITY**

» **Effective in the prophylaxis of migraine**

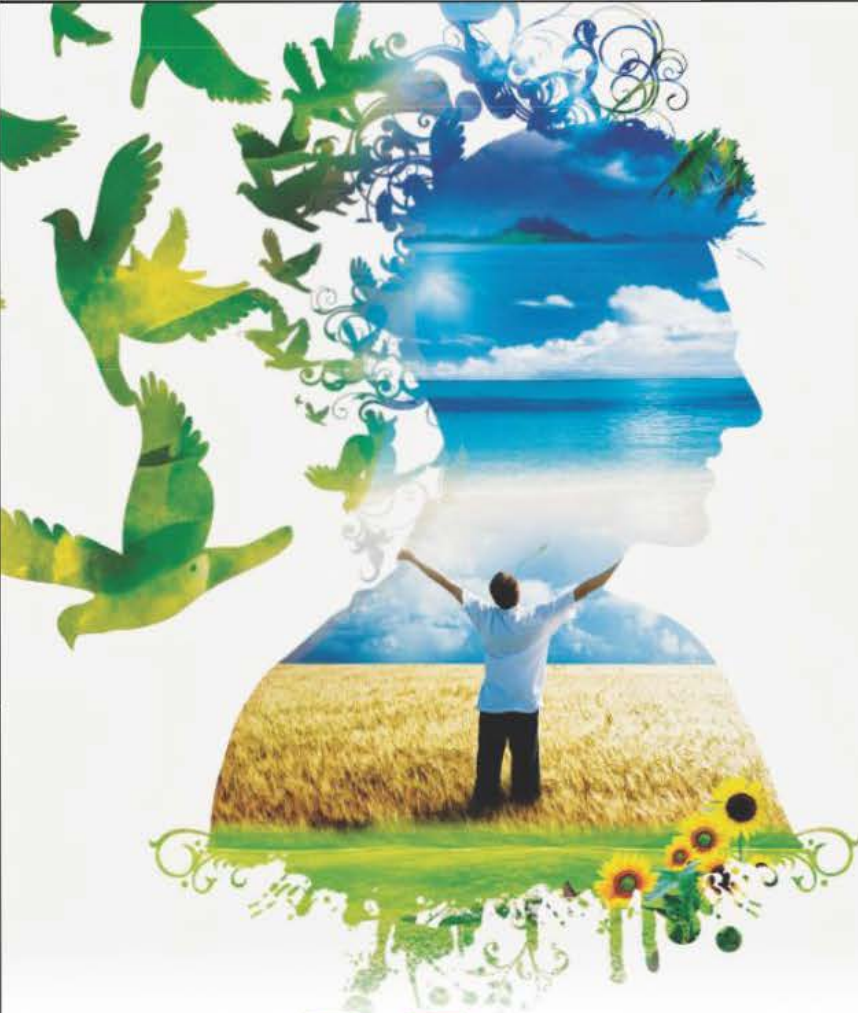
» **Occlusive peripheral vascular disease**

» **Vertigo of central & peripheral origin**

» **Adjuvant in the therapy of epilepsy**

Also available : TM
MIGRUB-PR
Flunarizine 10 mg + Propanolol 40mg **Capsules**

Assures satisfactory outcome



Bright Hope for
Dark Days

**ANXIETY
PANIC
SEIZURES**

NazpamTM **Tablets**
0.25
0.5
Clonazepam 0.25/0.5 mg (M.D)

Benzodiazepine derivative have anticonvulsant activity which enhance activity of gamma-aminobutyric acid, an inhibitory neurotransmitter in CNS

Improves sleep disturbances associated with nocturnal myoclonus

In -

Epilepsy

Lennox-Gastaut syndrome

Akinetic & myoclonic seizures

Panic disorders

Also available :

NazpamTM **Tablets**
1
2
Clonazepam 1/2 mg

Nazpam-PRTM **Tablets**
Clonazepam 0.5 mg
+ Propanolol 20mg

CLONAZEPAM.....TRUSTED PROTECTION



**WHEN
SPASTICITY
HIT YOU HARD**

NEFOLCAB-20TM
Baclofen 20 mg (SR) Tablets

- Baclofen is FDA approved to treat reversible spasticity associated with multiple sclerosis or spinal cord lesions.
- Baclofen is rapidly and completely absorbed from the gastrointestinal tract.
- Baclofen also be of some value in patients with spinal cord injuries & other spinal cord diseases.

Cerebral Palsy

Motor Neuron Disease

Diseases of the Spinal Cord

Multiple Sclerosis

Meningitis

Cerebrovascular Accidents

Also Available :

NEFOLCAB-10TM
Baclofen 10 mg Tablets

...alleviates Signs & Symptoms of Spasticity

Nexnip-D

Naproxen 500mg + Domperidone 10mg TABLETS



**Decrease the
Inflammatory
Mediator**

NAPROXEN

- Reversibly inhibiting both the COX-1 and COX-2 enzymes.
- Offers excellent therapy for rheumatoid & non rheumatoid conditions

DOMPERIDONE (Provides relief from gastric upset due to NSAIDS)

- Potent dopamine receptor antagonist acts centrally & produces Antiemetic effect.
- Increases oesophageal peristalsis & gastric motility.

**Rheumatoid Arthritis | Osteoarthritis | Ankylosing Spondylitis
Tendinitis | Bursitis | Acute Gout | Primary Dysmenorrhea**

Also available :

Nexnip-500 **PROVIDES IMMEDIATE
RELIEF FROM PAIN**
Naproxen 500mg TABLETS



Prevent Schizophrenia while the mind is still Bright

OLYPACTM **2.5** **5** **10**
Olanzapine 2.5 / 5 / 10mg **Tablets**

Olanzapine is in a class of medications called atypical antipsychotics.
It works by changing the activity of certain natural substances in the brain.

**Superior antipsychotic efficacy as compared with
haloperidol in the treatment of acute phase schizophrenia**

Drugs. 2001;61(1):111-61.

Demonstrated a modest effect in the treatment of bipolar disorders

Neuropsychiatr Dis Treat. 2007 Oct; 3(5): 579-587.



Also available :

OLYPAC-PLUSTM
Olanzapine 5 mg + Fluoxetine 20mg **Tablets**

Treats bipolar disorder
in adults & teenagers
13 years of age & older.

... decimates Bipolar disorder



PANLUSHTM-DSR

Pantoprazole (EC) 40 mg + Domperidone 30 mg (SR) **Capsules**

The combination of *most trusted Proton Pump Inhibitor -*
PANTOPRAZOLE & a *safe prokinetic agent -* **DOMPERIDONE**

Offers high efficacy in improving the symptoms of GERD

Aliment Pharmacol Ther 2004; 19:631-641.

No bioavailability interference from any food or antacid

Rapid action & fast symptomatic relief

Better oral bio availability

Gives the advantage of OD dose

GERD

Gastritis

Duodenal ulcers

Nausea & Vomiting associated with
acid peptic disorders

Dyspepsia

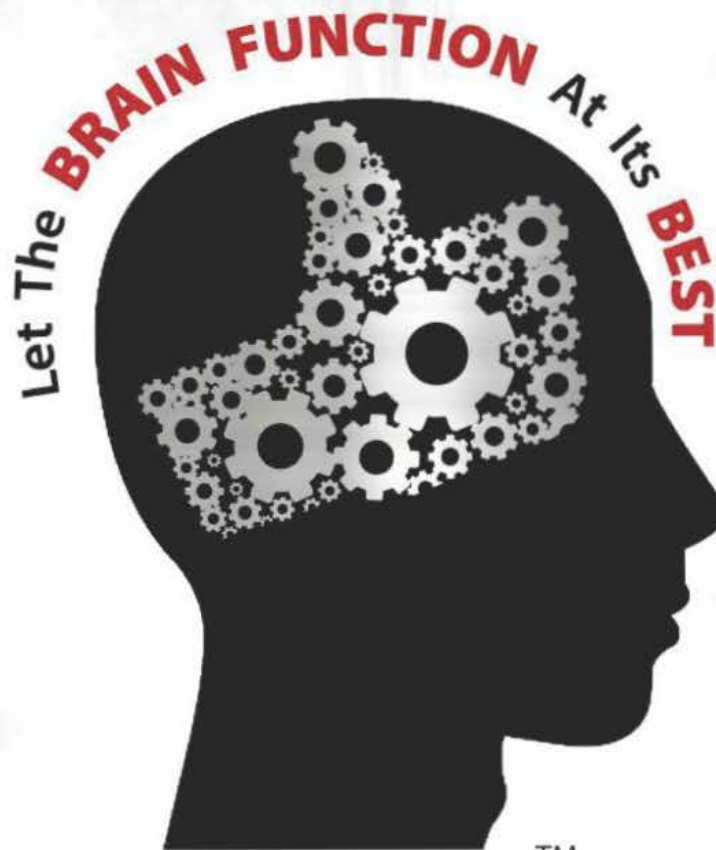
Post-operative Nausea & Vomiting

Also available :

PANLUSHTM-40

Pantoprazole 40 mg **Tablets**

...long lasting relief,
long lasting comfort



PEGPINTM-NT

Pregabalin 75mg + Nortriptyline 10mg **Tablets**

- **Pregabalin** belongs to group of medication called antiepileptics & acts by modifying the release of certain substances released by the nerves in the brain
- **Nortriptyline** is a tricyclic antidepressant and acts by increasing the level of chemicals (Norepinephrine, Serotonin); required for normal brain function

» **Seizures** » **Depression** » **Nerve damage pain**
» **Anxiety disorders** » **Bed wetting in children**

Also Available :

PEGPINTM-PLUS

Pregabalin 75mg + Nortriptyline 10mg +
Methylcobalamin 1500mcg **Tablets**

PEGPINTM-SR 75

Pregabalin 75mg (SR) **Tablets**

NORTICONTM-25

Nortriptyline 25mg **Tablets**

Synergy controls **peripheral neuropathic pain**

(1)(2) : <https://dailymed.nlm.nih.gov/dailymed/dr...> - Accessed: October 12, 2016.



Restores wellness
in
Bipolar Disorder
& **Schizophrenia**

PIPRACONTM 10 15

Aripiprazole 10 mg & 15mg **Tablets**

**Partial agonist of DOPAMINE D2 & SEROTONIN 5-HT1A RECEPTORS
and an antagonist of 5-HT2A RECEPTORS**

Approved by the FDA

- for the treatment of unipolar depression when used adjunctively with an antidepressant medication.
- for the treatment of acute manic and mixed episodes, in people older than 10 years.
- for the treatment of autism related irritability in children.

NORMALIZES HYPERPROLACTINEMIA

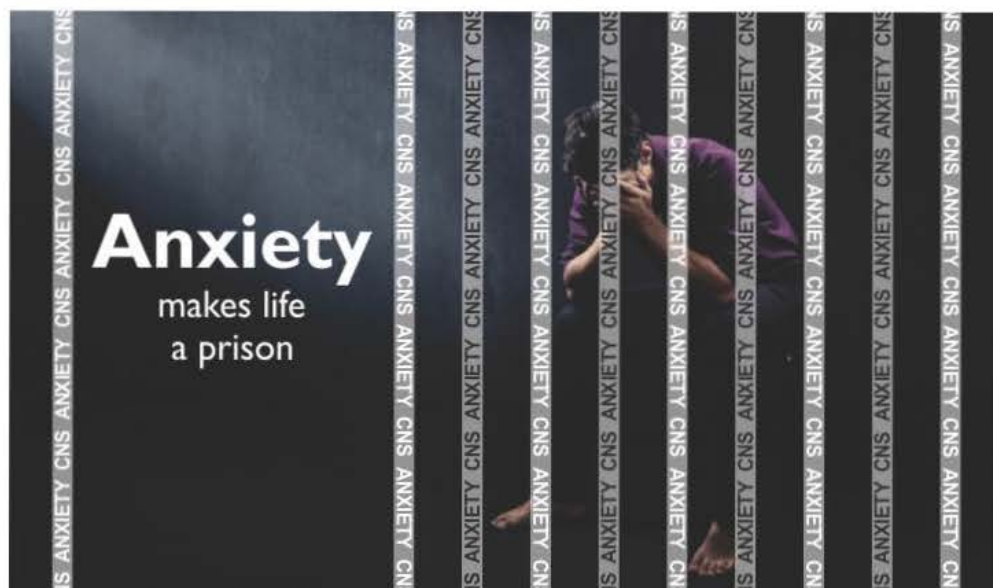
NO CHANGE IN GLUCOSE, LDL & HDL LEVELS

Class A drug in terms of Cardiac safety

Low weight gain potential

Avoids sedation

PIPRACONTM 10 15 Treat the problem with ease



PoxyclorTM-TR

TABLETS Chlordiazepoxide 10mg + Trifluoperazine 1mg

This combinational drug is used in Anxiety and CNS disorder.

Chlordiazepoxide and Trifluoperazine acts on CNS system &
Increases binding of the inhibitory neurotransmitter
GABA to the GABA (A) receptor.

Effective in :

Tension

Insomnia

Behavioural disorders

Emotional disturbances

Pre & post operative apprehensions

Also available :

PoxyclorTM ⁵/₁₀/₂₅
Chlordiazepoxide 5/10/25mg
TABLETS

Feel less nervous & take part in everyday life



For More of Effects &

Less of Side Effects

QTCONTM 25 50 100

Quetiapine Fumarate Sustained Release 25/50/100 mg **Tablets**

- US-FDA approved 2nd Generation dibenzothiazepine derivatives psychotropic agent
- Better safety profile as compared to Olanzapine & Clozapine
- Act through a combination of dopamine type 2 (D2) and serotonin type 2 (5HT2) antagonism
- Improves sleep efficiency, percentage stage 2 sleep and subjective sleep quality*

Cohrs S, et al., Psychopharmacology (Berlin), :2004; 174:421-429

Treatment of Schizophrenia

Maintenance treatment of bipolar disorder

Treatment of Sleep disorders

QTCONTM 25 50 100

...tackle the Schizophrenia with Q Tacle

Get the Desired Acid
Inhibition in a

clik with...



RIPCIDTM-DSR

Rabeprazole 20mg (EC) + Domperidone 30mg (SR) CAPSULES

- Rabeprazole offers faster onset of action as compared to other PPIs
- Domperidone reaches minimum concentration in the blood within 15-30 min. causing quick relief from nausea & vomiting.
- Combination provides significant and remarkable improvement in symptoms of GERD.



- GERD
- Dyspepsia
- Chronic Gastritis
- Erosive Esophagitis
- Nausea associated with Acid Peptic Disorders

Also available :

RIPCIDTM-LSR

Rabeprazole 20mg (EC) +
Levosulpiride 75mg (SR) CAPSULES

A distinguished option

**Hold smile,
Lifts Depression**



SERCABTM **25** **50** **100**
Sertraline 25/50/100 mg **Tablets**

- Blocks the reabsorption of serotonin in the brain.
- Ease depression by increasing levels of serotonin in the brain.

RESPONSE & REMISSION

- Effective in all subtype of major depressive disorder on all rating scales.
- Alleviates symptoms & offers remission.

- ☹️ **Major depressive disorder**
- ☹️ **Panic disorder**
- ☹️ **Post traumatic stress**
- ☹️ **Social anxiety disorder**

SERCABTM **Feels well being & happy**



WHEN
MUSCLE PAIN
DISTURBS
LIFE

SKIMCONTM-MR

Aceclofenac 100mg + Paracetamol 325mg + Chlorzoxazone 250mg **Tablets**

ACECLOFENAC

- Helps repair and regenerate articular cartilage.
- Minimum adverse effects on GIT as compared to other NSAIDs.

PARACETAMOL

- A time tested analgesic and antipyretic agent.
- Potentiates the action of aceclofenac in relieving pain & inflammation.

CHLORZOXAZONE

- Powerful, safe & centrally acting muscle relaxant.
- Increases mobility of the involved muscles.

**Rheumatoid arthritis | Ankylosing Spondylitis
Gout attack | Sport injuries | Osteoarthritis | Muscle spasm**

ALSO AVAILABLE :

SKIMCONTM-SP **SKIMCONTM**
Aceclofenac 100mg + Paracetamol 325mg
+ Serratiopeptidase 15mg **Tablets** Aceclofenac 100mg + Paracetamol 325mg
Tablets

ENJOY PAIN FREE LIFE

Safer solution for Chronic Schizophrenics...

SulpifixTM 50 100 200

Amisulpride 50 / 100 /200 mg **Tablets**

- An atypical 2nd generation antipsychotic medicine
- Highly selectively dopaminergic D2/D3 antagonist with fewer EPS*
- The high efficacy against negative symptoms due to combined 5-HT₂-D2 antagonism*
- No affinity for serotonic, α -adrenergic, histamine H1 and cholinergic receptors
- Better tolerability profile than haloperidol

*Int J Neuropsychopharmacol. 2004 Mar;7 Suppl 1:S15-20.

Hum Psychopharmacol. 2002 Jan;17(1):1-13.

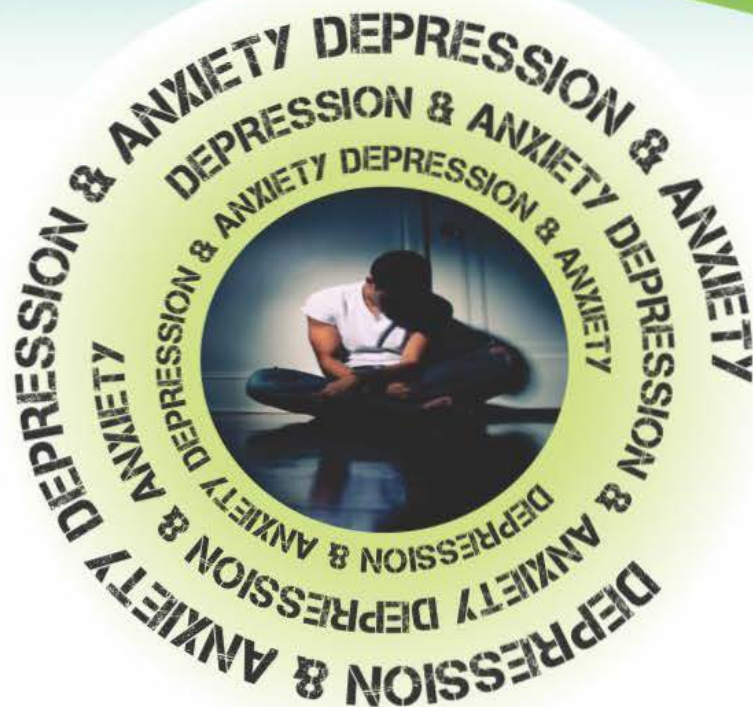


**Acute & Chronic
Schizophrenia**

**Dysthymia
Persistent Depressive
Disorder**

SulpifixTM 50 100 200

...a new age Antipsychotic



When Situations led to *Loneliness*

TEXOCONTM 12.5
25
37.5

Paroxetine 12.5/25/37.5mg Tablets

Paroxetine is a selective serotonin reuptake inhibitor (SSRI). It works by restoring the balance of serotonin, a natural substance in the brain, which helps to improve certain mood problems.

Treats

- Depression or obsessive-compulsive disorder (OCD).
- Panic disorder or posttraumatic stress disorder (PTSD).
- Generalized anxiety disorder or social anxiety disorder.

Also Available :

TEXOCON-CZTM Tablets

Paroxetine 12.5mg + Clonazepam 0.5mg

Single solution for all type of DEPRESSION



**SMALL CHANGES
MAKES A BIG
DIFFERENCE**

Trexnil-T5

Trihexphenidyl 2mg + Trifluoperazine 5mg **Tablets**



Indicated in :

**Parkinson's Disease
&
Movement disorders**

Trihexyphenidyl

- » Used to treat symptoms of parkinson's disease or involuntary movements due to the side effects of certain psychiatric drugs
- » Belongs to a class of medication called anticholinergics that work by blocking a certain natural substance
- » Decrease muscle stiffness, sweating, and the production of saliva, and helps improve walking ability in people with parkinson's disease.

Trifluoperazine

- » A typical antipsychotic blocking the action of a chemical messenger (dopamine) in the brain that affects thoughts and mood

Also available :

Trexnil-2

Trihexphenidyl 2mg **Tablets**

the care taker of your life



TRIM UP DEPRESSION & ANXIETY

Trimlot-PlusTM

Amitriptyline 12.5 mg + Chlordiazepoxide 5 mg **Tablets**

Chlordiazepoxide : An effective anxiolytic.

Amitriptyline : An effective anti- depressant.

- » Relieves feeling of guilt & worthlessness
- » Reduces agitation, anxiety & panic
- » Relieves anorexia, insomnia & tension headaches
- » Drive away suicidal ideation
- » Improves mood & behavior

Primary Depression | Neuropathy & Neuralgia
Migraine | Anxiety | Cyclic Vomiting Syndrome

Also available :

TrimlotTM 
Amitriptyline 10/25/50 mg **Tablets**

GETTING BACK
TO WORK FASTER....





VERTIP

when
"STABILITY"
is urgently
required

VERTIPTM

| |
|----|
| 8 |
| 16 |

Betahistine 8 & 16 mg Tablets



Betahistine works by reducing the amount of fluid in inner ear therefore it relieves the symptoms such as :

⇒ **VERTIGO**

⇒ **MINIERE'S SYNDROME....**

Dizziness, tinnitus, nausea, headache & accompanied by loss of hearing symptomatic treatment of vestibular vertigo.

Improves quality of life
Well Tolerated, Highly Efficacious



*When **anxiety** takes
over your life*

VOXOFULTM CR 
Fluvoxamine 50mg/100mg (CR) **Tablets**

- » A selective serotonin reuptake inhibitor
- » U.S. FDA approved for the treatment of obsessive compulsive disorder (OCD).
- » Causes no sedation or cognitive impairment.
- » No significant effect on body weight or cardiovascular parameters.
- » It does not induce significant withdrawal syndrome.

Obsessive Compulsive Disorder (OCD)

Social Anxiety Disorder

Panic Disorder

VOXOFULTM CR 

Get your life back on track